

*Pioneer*

**DJ CONTROLLER**

**DDJ-T1**

**“TRAKTOR PRO 2”  
Settings File Import Guide**

# Introduction

---

Pioneer provides a settings file exclusively for the Native Instrument's "TRAKTOR PRO 2" DJ software. By using this file, the "TRAKTOR PRO 2" sample decks can be controlled with this unit.

- Decks C and D are assigned as the sample decks.
- The settings file does not cover all functions. The user must make other settings as necessary.
- For instructions on using the sample decks and making other settings, see the TRAKTOR 2 operation manual ("Traktor 2 Application Reference English.pdf").
- You must upgrade to "TRAKTOR PRO 2" (for a fee) before using the settings file.
- Those who do not plan to use the sample decks do not need to import this file.

# Importing the Settings File

## 1 Download the Settings file from the Pioneer website:

<http://pioneer.jp/support/download/dj/ddj-t1/>

Since the download file is in the ZIP compressed format, extract the file before proceeding. The file may automatically expand depending on your browser, in which case there will be no need for you to expand it yourself.

- **Windows users**

Right click the download file and select [Extract All].

After the expansion wizard is displayed, specify the destination folder for the extracted files.

- **Macintosh users**

Double click the downloaded ZIP file to expand.

After the zip file is extracted, the file “PIONEER\_DDJ-T1\_V100.tsi” will be extracted.

## 2 At step 1, save the downloaded “PIONEER\_DDJ-T1\_V100.tsi” file in the desired location.

Example: Windows > My Documents¥Native Instruments¥Traktor 2.x.x¥Settings

Macintosh > ~/Documents/Native Instruments/Traktor 2.x.x/Settings

## 3 Open the Preferences window, then click the [Import] button.

Select the “PIONEER\_DDJ-T1\_V100.tsi” file saved in step 2.

\* If there is already a different settings file, the new settings file may not operate properly.

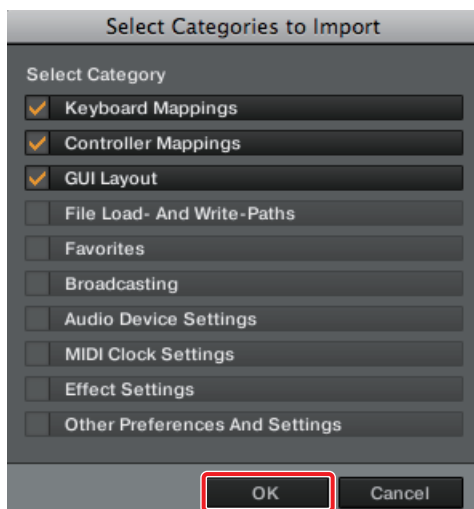
Delete any other settings file before performing this procedure.

For instructions on deleting the settings file, see “Deleting Settings Files” on page 5.



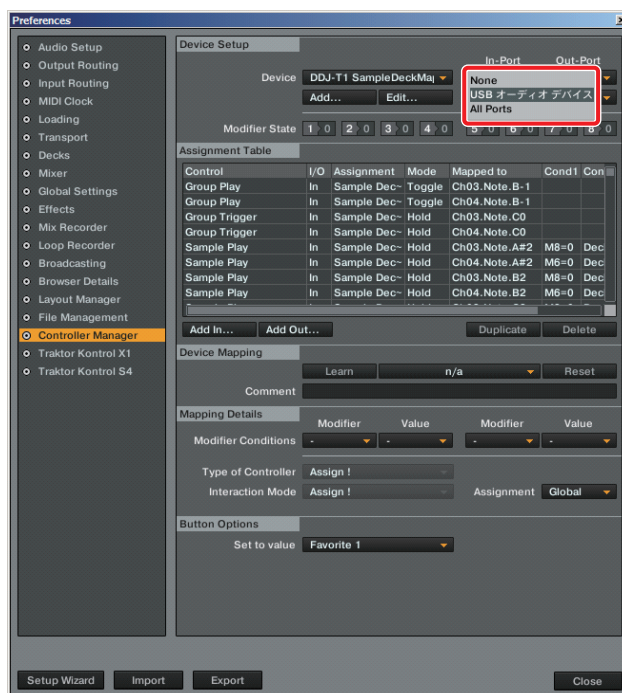
#### 4 Click the [OK] button.

The HID and MIDI mappings are loaded, and the GUI layout for this settings file is set simultaneously. Use this settings file with sample decks C and D.



#### 5 Open Controller Manager.

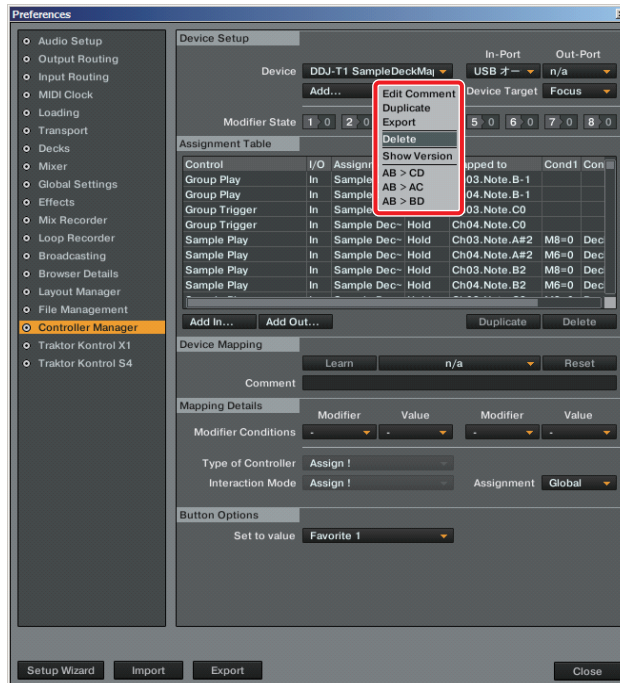
- ① At [Device], select [Pro 2 Sample Deck 1 - Pioneer.DDJ-T1], and at [In-Port], select the device corresponding to the DDJ-T1.
- ② At [Device], select [Pro 2 Sample Deck 2 - Generic MIDI], and at [In-Port] and [Out-Port], select the audio device corresponding to the DDJ-T1.



# Deleting Settings Files

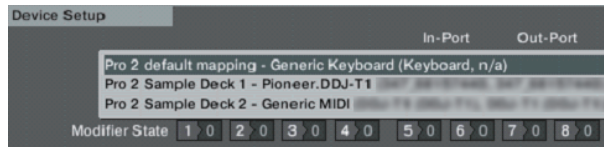
## 1 Open Controller Manager.

At [Device], select the setting to be deleted, then select [Delete] from [Edit...].



# To Use Decks C and D as Track Decks

- 1 Using the procedure under “Deleting Settings Files” on page 5, delete the “Pro 2 Sample Deck 1- Pioneer.DDJ-T1 (XXX\_XXXXXXXX, XXX\_XXXXXXXX)” and “Pro 2 Sample Deck 2- Generic MIDI (XXXXXX (XXXXXX),XXXXXX (XXXXXX))” sample deck control mappings.



- 2 Disconnect the DDJ-T1 from the PC/Mac, then reconnect it.

\* Problems may arise with TRAKTOR PRO 2 control if the DDJ-T1 is reconnected while TRAKTOR PRO 2 is running.

It is recommended that you reconnect the DDJ-T1 using the following procedure:

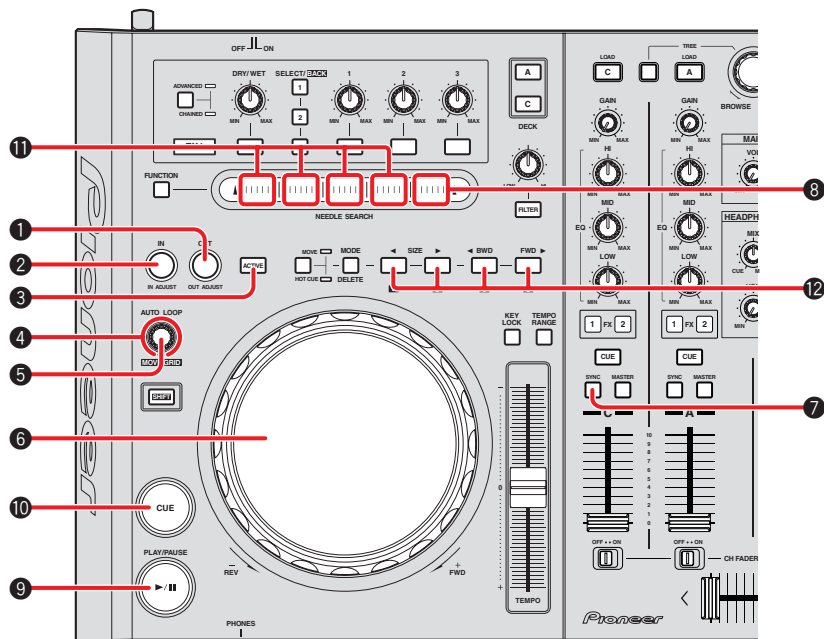
- ① Quit TRAKTOR PRO 2.
- ② Disconnect the DDJ-T1 from the PC/Mac, then reconnect it.
- ③ Relaunch TRAKTOR PRO 2.

- 3 Click the letter for the deck whose assignment you want to change, then select [Track Deck].



# Operating "TRAKTOR PRO 2" Using This Unit's Buttons

The default settings are as follows:



## When Decks C and D are selected

	DDJ-T1 button	TRAKTOR PRO 2 function	
4-slot simultaneous operation	1	OUT (OUT ADJUST) button	Slot Size x2
	2	IN (IN ADJUST) button	Slot Size /2
	3	ACTIVE button	Slot Size Reset
	4	AUTO LOOP (MOVE GRID) control (turn)	Slot Volume
	5	AUTO LOOP (MOVE GRID) control (press)	Slot Volume (Maximum)
	SHIFT+4	AUTO LOOP (MOVE GRID) control (turn)	Slot Filter
	SHIFT+5	AUTO LOOP (MOVE GRID) control (press)	Slot Filter On/Off
	6	Jog dial	Slot Scratch On Slot Scratch Slot Tempo Bend
	7	SYNC button	Slot Phase Sync
	8	When [FUNCTION] is ON NEEDLE SEARCH pad	Group Play*
Single slot operation	9	PLAY/PAUSE ►/   button	Group Play
	10	CUE button	Group Trigger
	11	When [FUNCTION] is ON NEEDLE SEARCH pad	Sample Play*
	12	MOVE PANEL/HOT CUE PANEL [1]/[5] button [2]/[6] button [3]/[7] button [4]/[8] button	See "About HOT CUE Assignment" below.

\* Even when decks A and B are selected, when the [FUNCTION] button is turned on, the sample decks can be operated using the [NEEDLE SEARCH] pad.

## About HOT CUE Assignment

	Not Load	Slot Load
HOT CUE	Load from Deck	Sample Play
SHIFT + HOT CUE	Load from List	Sample Trigger
MOVE/DELETE + HOT CUE		Delete Slot

- For the various sampler functions, see the TRAKTOR 2 English manual ("Traktor 2 Application Reference English.pdf").

- TRAKTOR is the registered trademark of Native Instruments GmbH.
- Windows®, Windows 7, Windows Vista® and Windows XP are the registered trademarks and trademarks of Microsoft Corporation registered in the United States of America and other countries.
- Mac OS is the trademark of Apple Inc. registered in the United States of America and other countries.

© 2011 PIONEER CORPORATION.  
All rights reserved.

---

**PIONEER CORPORATION**

1-1, Shin-ogura, Saiwai-ku, Kawasaki-shi, Kanagawa 212-0031, Japan

**PIONEER ELECTRONICS (USA) INC.**

P.O. BOX 1540, Long Beach, California 90801-1540, U.S.A. TEL: (800) 421-1404

**PIONEER ELECTRONICS OF CANADA, INC.**

340 Ferrier Street, Unit 2, Markham, Ontario L3R 2Z5, Canada TEL: 1-877-283-5901, 905-479-4411

**PIONEER EUROPE NV**

Haven 1087, Keetberglaan 1, B-9120 Melsele, Belgium TEL: 03/570.05.11

**PIONEER ELECTRONICS ASIACENTRE PTE. LTD.**

253 Alexandra Road, #04-01, Singapore 159936 TEL: 65-6472-7555

**PIONEER ELECTRONICS AUSTRALIA PTY. LTD.**

5 Arco Lane, Heatherton, Victoria, 3202, Australia, TEL: (03) 9586-6300

**PIONEER ELECTRONICS DE MEXICO S.A. DE C.V.**

Blvd.Manuel Avila Camacho 138 10 piso Col.Lomas de Chapultepec, Mexico, D.F. 11000 TEL: 55-9178-4270

<DRI1026-A>