

TS-C720PRS 200W MAX./NOM. 50W

TS-C520PRS 150W MAX./NOM. 30W

Packaged Component Speaker System
 Flush-Mount 17 cm (6-3/4") WOOFER
 Ø28 mm (1-1/8") SOFT DOME TWEETER

Ensemble De Haut-Parleurs Component
 HP GRAVE DE 17 cm À Montage Encastré
 HP AIGU À DÔME SOUPLE DE Ø28 mm

Sistema De Altavoces Componentes Integrado
 ALTAVOZ DE GRAVES DE 17 cm Para Montaje Mural
 Ø28 mm DEL ALTAVOZ DE SONIDOS AGUDOS ABOVEDADO BASE

Packaged Component Speaker System
 Flush-Mount 13 cm (5-1/4") WOOFER
 Ø28 mm (1-1/8") SOFT DOME TWEETER

Ensemble De Haut-Parleurs Component
 HP GRAVE DE 13 cm À Montage Encastré
 HP AIGU À DÔME SOUPLE DE Ø28 mm

Sistema De Altavoces Componentes Integrado
 ALTAVOZ DE GRAVES DE 13 cm Para Montaje Mural
 Ø28 mm DEL ALTAVOZ DE SONIDOS AGUDOS ABOVEDADO BASE

Be sure to read this instruction manual before installing this speaker.

Antes de instalar el altavoz es importante que lea estas instrucciones.

Prrière de lire obligatoirement ce manuel d'installation avant de monter les haut-parleurs.

Leia este manual de instruções antes de instalar o alto-falante.

⚠WARNING



Dear Customer:

Selecting fine audio equipment such as the unit you've just purchased is only the start of your musical enjoyment. Now it's time to consider how you can maximize the fun and excitement your equipment offers. PIONEER and the Electronic Industries Association's Consumer Electronics Group want you to get the most out of your equipment by playing it at a safe level. One that lets the sound come through loud and clear without annoying blaring or distortion—and, most importantly, without affecting your sensitive hearing.

Sound can be deceiving. Over time your hearing "comfort level" adapts to higher volumes of sound. So what sounds "normal" can actually be loud and harmful to your hearing. Guard against this by setting your equipment at a safe level BEFORE your hearing adapts.

To establish a safe level:

- Start your volume control at a low setting.
- Slowly increase the sound until you can hear it comfortably and clearly, and without distortion.

Once you have established a comfortable sound level:

- Set the dial and leave it there.

Taking a minute to do this now will help to prevent hearing damage or loss in the future. After all, we want you listening for a lifetime.



We Want You Listening For A Lifetime

Used wisely, your new sound equipment will provide a lifetime of fun and enjoyment. Since hearing damage from loud noise is often undetectable until it is too late, PIONEER ELECTRONICS and the Electronic Industries Association's Consumer Electronics Group recommend you avoid prolonged exposure to excessive noise. This list of sound levels is included for your protection.

Decibel

Level	Example
30	Quiet library, soft whispers
40	Living room, refrigerator, bedroom away from traffic
50	Light traffic, normal conversation, quiet office
60	Air conditioner at 20 feet, sewing machine
70	Vacuum cleaner, hair dryer, noisy restaurant
80	Average city traffic, garbage disposals, alarm clock at two feet.

THE FOLLOWING NOISES CAN BE DANGEROUS UNDER CONSTANT EXPOSURE

90	Subway, motorcycle, truck traffic, lawn mower
100	Garbage truck, chain saw, pneumatic drill
120	Rock band concert in front of speakers, thunderclap
140	Gunshot blast, jet plane
180	Rocket launching pad

Information courtesy of the Deafness Research Foundation.



⚠CAUTION

- Do not touch the speaker flexible wire (A).
- Do not use the speaker independently. To avoid breakage, be sure to use the specified network.
- Do not change the direction of the speaker terminal assembly (B).
- Make sure lead and speaker terminals do not contact metal.
- When making connections, refer also to the instruction manual of the car stereo used.
- Do not pull the tweeter cord with force. Do not bend the terminal with force (C).

WARNING :

Handling the cord on this product or cords associated with accessories sold with the product will expose you to chemicals listed on proposition 65 known to the State of California and other governmental entities to cause cancer and birth defect or other reproductive harm.

Wash hands after handling.

⚠ATTENTION

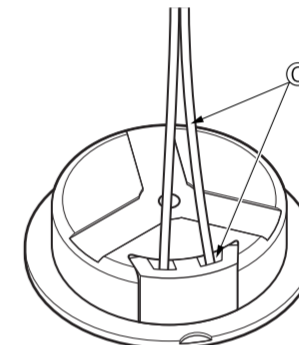
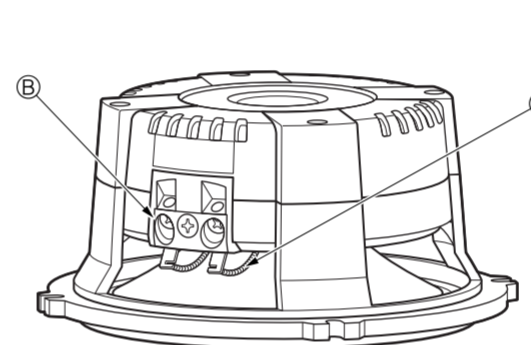
- Ne jamais toucher le fil flexible de haut-parleur (A).
- Ne pas utiliser le haut-parleur indépendamment. Pour éviter des dégâts, veiller à employer le réseau spécifié.
- Ne pas modifier l'orientation de plaquette de connexions du haut-parleur (B).
- S'assurer que les fils et les bornes de haut-parleurs ne touchent pas une pièce métallique.
- Le branchement s'opère après consultation de la notice d'instructions de l'autoradio qui est utilisé.
- Ne tirez pas avec force sur le cordon du haut-parleur d'aigus. Ne pliez pas avec force le terminal (C).

⚠PRECAUCION

- No se debe tocar el alambre flexible (A) del altavoz.
- No utilice el altavoz independientemente. Con el fin de evitar daño, asegúrese de utilizar la red especificada.
- No cambiar la dirección del ensamblaje de terminal del altavoz (B).
- Asegurarse de que los terminales del altavoz y el hilo conductor no están en contacto con el metal.
- Para hacer la conexión consultar también el manual de instrucciones que se provee para el "reproductor."
- No tire con fuerza del cable del altavoz de sonidos agudos. No doble el terminal con fuerza (C).

⚠PRECAUÇÃO

- Não toque no fio flexível do alto-falante (A).
- Não use este alto-falante independentemente. Para evitar defeitos, assegure-se de usar a rede especificada.
- Não mude a direção de montagem do terminal do alto-falante (B).
- Assure-se de que o fio e os terminais do alto-falantes não entrem em contacto com metal.
- Quando da realização das conexões, favor referir-se também ao manual de instruções do estereo de carro que está sendo usado.
- Não puxe o cabo do tweeter com força. Não entorte o terminal com força (C).



TS-C720PRS

● SPECIFICATIONS

• Woofer	Speaker specifications	• 170 mm (6-3/4" Dia.) Cone 3-Layer composite cone Micro fiber surround Dual OFC short ring Short voice-coil design Bottom hold design die-cast rigid chassis Strontium magnet : 557 g (19.5 oz)
• Tweeter	Speaker specifications	• 28 mm (1-1/8" Dia.) Soft dome Lightweight soft dome diaphragm Aluminum chassis include acoustic chamber OFC short ring Magnetic fluid Dual neodymium magnet : total 21.2 g (0.7 oz)
• Nominal impedance	4 Ω	
• Maximum music power [Nominal]	200 W [50 W]	
• Cut off frequency	≥ 2 000 Hz with -12 dB	
• Grille material	Heat-proof resin	
• Weight (per speaker including accessory parts)	2.65 kg (5 lb 13 oz)	
• Gross weight (2 speakers including packaging)	5.8 kg (12 lb 13 oz)	

● CARACTERISTIQUES

• HP Grave	Spécifications des haut-parleurs	• 170 mm Cône composite en 3 couches Environnement micro fibres Bague courte double en cuivre exempt d'oxygène (OFC) Conception bobine mobile courte Chassis rigide moule sous pression de support de la base-chassis rigide moule Aimant en strontium : 557 g
• HP Aigu	Spécifications des haut-parleurs	• 28 mm Dôme souple Diaphragme dôme mou léger Chassis en aluminium incluant une chambre acoustique Bague courte en cuivre exempt d'oxygène (OFC) Fluide magnétique Aimant au neodyme double : total 21,2 g
• Impédance nominale	4 Ω	
• Puissance musicale maximum [nominale]	200 W [50 W]	
• Fréquence de coupure	≥ 2 000 Hz avec -12 dB	
• Matériau de grille	Résine résistante à la chaleur	
• Poids (par haut-parleur pièces accessoires comprises)	2,65 kg	
• Poids brut (2 haut-parleurs emballage compris)	5,8 kg	

● ESPECIFICACIONES

• Woofer	Especificaciones del altavoz	• 170 mm Cono compuesto de 3 capas Borde de micro-fibra Anillo corto doble de OFC Dibujo de bobina de voz corta Chasis rígido de fundición con dibujo de apoyo de fondo Ímán de estroncio : 557 g
• Tweeter	Especificaciones del altavoz	• 28 mm Techo blanco Diafragma en forma de domo blando y liviano Chasis de aluminio con cámara acústica Anillo corto de OFC Fluido magnético Ímán de neodimio doble : total 21,2 g
• Impedancia nominal	4 Ω	
• Máxima potencia de música [nominal]	200 W [50 W]	
• Frecuencia de corte	≥ 2 000 Hz con -12 dB	
• Material de la rejilla	Resina a prueba de calor	
• Peso (por altavoz incluyendo accesorios)	2,65 kg	
• Peso bruto (2 altavoces incluyendo embalaje)	5,8 kg	

● ESPECIFICAÇÕES

• Woofer	Especificações do alto-falante	• 170 mm Cono compuesto de 3 camadas Borde de micro-fibra Anel curto duplo de OFC Design de bobina de voz curta Chassi rígido de die-cast com design de apoio de fundo Ímã de estroncio : 557 g
• Tweeter	Especificações do alto-falante	• 28 mm Domo branco Diafragma dômico macio e leve Chassi de alumínio com cmara acústica Anel curto de OFC Fluido magnético Ímã de neodímio duplo : total 21,2 g
• Impedância nominal	4 Ω	
• Potência máxima de música [nominal]	200 W [50 W]	
• Freqüência de corte	≥ 2 000 Hz com -12 dB	
• Material da tela	Resina à prova de calor	
• Peso (por alto-falante incluindo peças acessórias)	2,65 kg	
• Peso bruto (2 alto-falantes incluindo empacotamento)	5,8 kg	

TS-C520PRS

● SPECIFICATIONS

• Woofer	Speaker specifications	• 130 mm (5-1/4" Dia.) Cone 3-Layer composite cone Micro fiber surround Dual OFC short ring Short voice-coil design Bottom hold design die-cast rigid chassis Strontium magnet : 393 g (13.7 oz)
• Tweeter	Speaker specifications	• 28 mm (1-1/8" Dia.) Soft dome Lightweight soft dome diaphragm Aluminum chassis include acoustic chamber OFC short ring Magnetic fluid Dual neodymium magnet : total 21.2 g (0.7 oz)
• Nominal impedance	4 Ω	
• Maximum music power [Nominal]	150 W [30 W]	
• Cut off frequency	≥ 2 000 Hz with -12 dB	
• Grille material	Heat-proof resin	
• Weight (per speaker including accessory parts)	2.05 kg (4 lb 8 oz)	
• Gross weight (2 speakers including packaging)	4.6 kg (10 lb 2 oz)	

● CARACTERISTIQUES

• HP Grave	Spécifications des haut-parleurs	• 130 mm Cône composite en 3 couches Environnement micro fibres Bague courte double en cuivre exempt d'oxygène (OFC) Conception bobine mobile courte Chassis rigide moule sous pression de support de la base-chassis rigide moule Aimant en strontium : 393 g
• HP Aigu	Spécifications des haut-parleurs	• 28 mm Dôme souple Diaphragme dôme mou léger Chassis en aluminium incluant une chambre acoustique Bague courte en cuivre exempt d'oxygène (OFC) Fluide magnétique Aimant au neodyme double : total 21,2 g
• Impédance nominale	4 Ω	
• Puissance musicale maximum [nominale]	150 W [30 W]	
• Fréquence de coupure	≥ 2 000 Hz avec -12 dB	
• Matériau de grille	Résine résistante à la chaleur	
• Poids (par haut-parleur pièces accessoires comprises)	2,05 kg	
• Poids brut (2 haut-parleurs emballage compris)	4,6 kg	

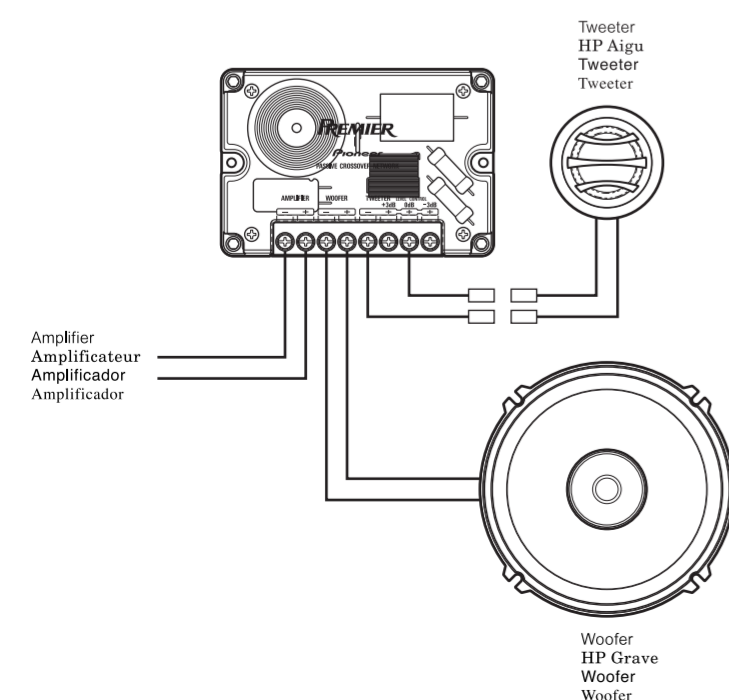
● ESPECIFICACIONES

• Woofer	Especificaciones del altavoz	• 130 mm Cono compuesto de 3 capas Borde de micro-fibra Anillo corto doble de OFC Dibujo de bobina de voz corta Chasis rígido de fundición con dibujo de apoyo de fondo Ímán de estroncio : 393 g
• Tweeter	Especificaciones del altavoz	• 28 mm Techo blanco Diafragma en forma de domo blando y liviano Chasis de aluminio con cámara acústica Anillo corto de OFC Fluido magnético Ímán de neodimio doble : total 21,2 g
• Impedancia nominal	4 Ω	
• Máxima potencia de música [nominal]	150 W [30 W]	
• Frecuencia de corte	≥ 2 000 Hz con -12 dB	
• Material de la rejilla	Resina a prueba de calor	
• Peso (por altavoz incluyendo accesorios)	2,05 kg	
• Peso bruto (2 altavoces incluyendo embalaje)	4,6 kg	

● ESPECIFICAÇÕES

• Woofer	Especificações do alto-falante	• 130 mm Cono compuesto de 3 camadas Borde de micro-fibra Anel curto duplo de OFC Design de bobina de voz curta Chassi rígido de die-cast com design de apoio de fundo Ímã de estroncio : 393 g
• Tweeter	Especificações do alto-falante	• 28 mm Domo branco Diafragma dômico macio e leve Chassi de alumínio com cmara acústica Anel curto de OFC Fluido magnético Ímã de neodímio duplo : total 21,2 g
• Impedância nominal	4 Ω	
• Potência máxima de música [nominal]	150 W [30 W]	
• Freqüência de corte	≥ 2 000 Hz com -12 dB	
• Material da tela	Resina à prova de calor	
• Peso (por alto-falante incluindo peças acessórias)	2,05 kg	
• Peso bruto (2 alto-falantes incluindo empacotamento)	4,6 kg	

● CONNECTIONS ● CONNEXIONS ● CONEXIONES ● CONEXÕES



● PARAMETERS ● PARAMETRES ● PARÁMETROS ● PARÂMETROS

● Woofer ● HP Grave ● Woofer ● Woofer

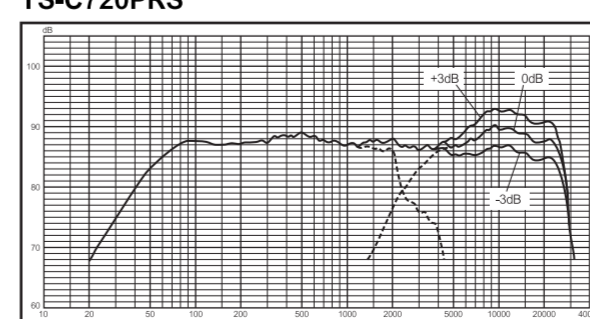
Model Modèle Modelo	Revc (Ω)	Levc (mH)	Fs (Hz)	Zmax (Ω)	Qms	Qes	Qts	Vas (cu.ft) (liter)	Rms (N.S/m)	Mms (g)	Cms (m/N)	BL (T.m)	Sd (sq.in) (sq.m)	Hvc (inch) (mm)	Hag (inch) (mm)	Displacement (cu.ft) (liter)
TS-C720PRS	2.7	0.33	66	35.8	9.12	0.76	0.71	0.32 9.2	0.76	16.9	3.46E-04	5.02	21.20 0.014	0.24 6.2	0.55 14	0.021 0.59
TS-C520PRS	2.7	0.2	80	30.2	9.20	0.93	0.85	0.15 4.3	0.56	10.3	3.84E-04	3.92	13.76 0.009	0.22 5.6	0.55 14	0.014 0.39

● Tweeter ● HP Aigu ● Tweeter ● Tweeter

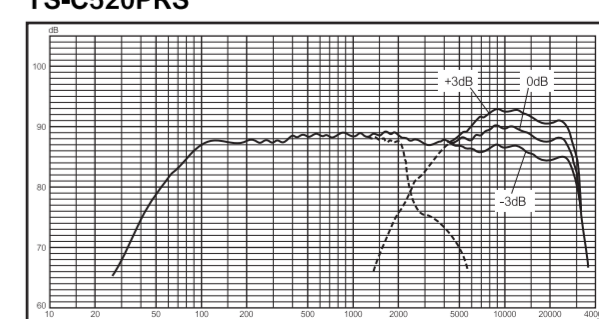
Model Modèle Modelo	Revc (Ω)	Levc (mH)
TS-C720PRS	5	0.02
TS-C520PRS	5	0.02

● CHARACTERISTICS ● CARACTERISTIQUES ● CARACTERÍSTICAS ● CARACTERÍSTICAS

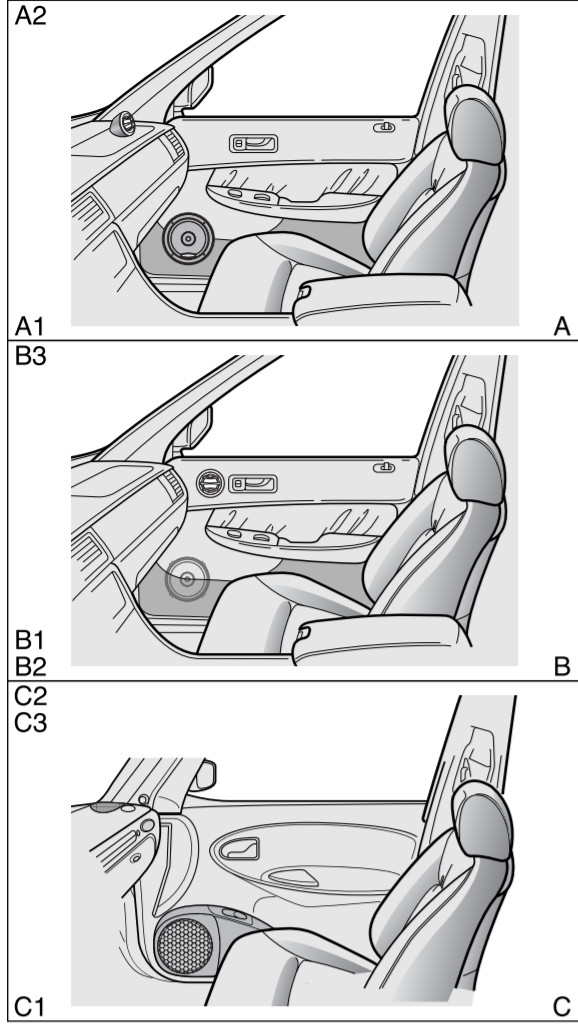
TS-C720PRS



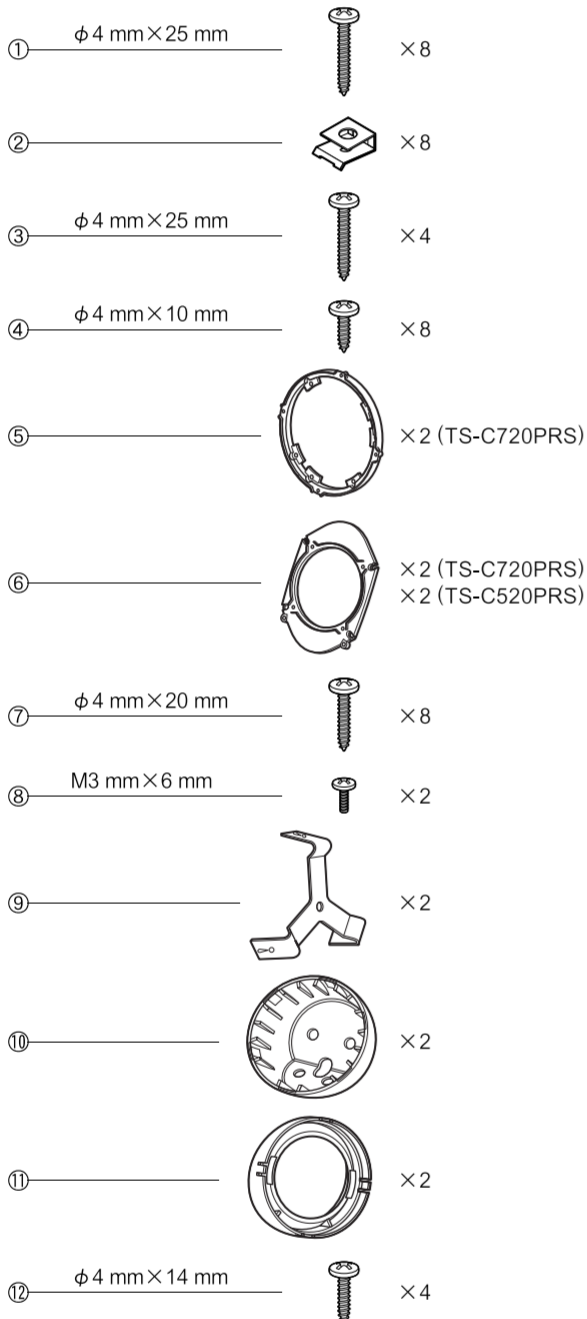
TS-C520PRS



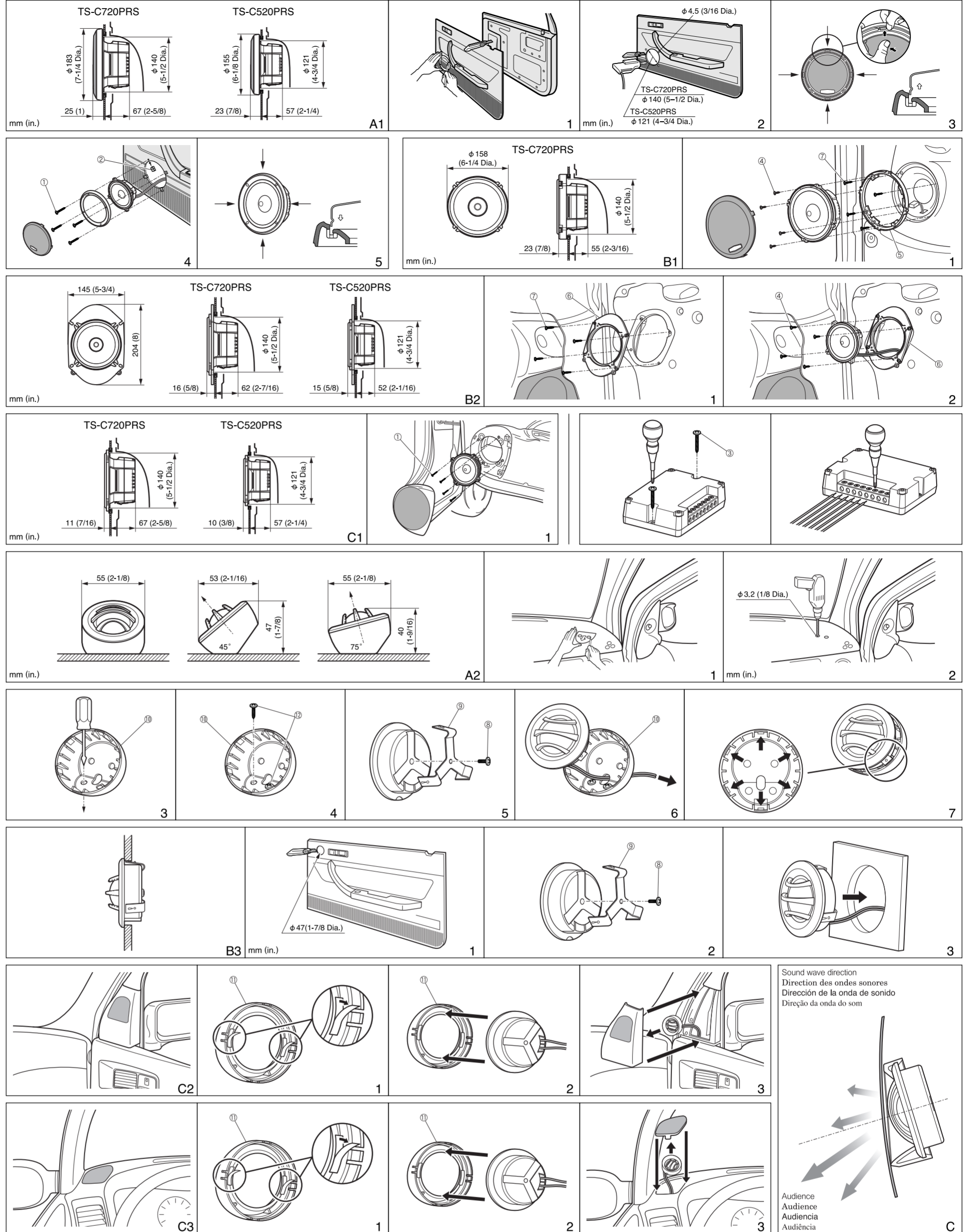
● EXAMPLE OF MOUNTING
● EXEMPLE DE MONTAGE
● EJEMPLO DE MONTAJE
● EXEMPLO DE MONTAGEM



● PARTS INCLUDED
● PIÈCES COMPRIS
● PIEZAS INCLUIDAS
● PECAS INCLUIDAS



● HOW TO INSTALL ● MODE D'INSTALLATION ● INSTALACION ● COMO INSTALAR



● FEATURES

- 3-LAYER ARAMID FIBER WITH RIGILITE™ IMPP™ COMPOSITE CONE
- HIGH DENSITY MICRO FIBER SURROUND FOR SMOOTH RESPONSE
- SHORT VOICE COIL AND WIDE MAGNETIC FIELD DESIGN FOR SYMMETRIC AND LINEAR CONE MOTION
- DUAL OFC SHORT RING FOR REDUCED DISTORTION
- BOTTOM HOLD DESIGN DIE-CAST RIGID CHASSIS
- ALUMINUM DIE-CAST CENTER PLUG
- 1-1/8" LIGHTWEIGHT SOFT DOME TWEETER
- CANCEL MAGNET DESIGN FOR EXTREMELY HIGH DENSITY MAGNETIC FIELD
- REAR CHAMBER DESIGN FOR LOWER CROSSOVER FREQUENCY
- ALUMINUM DIE-CAST TWEETER CHASSIS
- AUDIOPHILE-GRADE OUTBOARD CROSSOVER NETWORK INCLUDED WITH -12 dB/OCT. LPF/HPF
- GOLD PLATED SCREW-TYPE TERMINALS

● CARACTÉRISTIQUES

- 3 COUCHES DE FIBRES ARAMIDE AVEC CONE COMPOSITE RIGILITE™ & IMPP™
- ENVIRONNEMENT DE MICRO FIBRES HAUTE DENSITE POUR UNE REPOSE EN DOUCEUR
- BOBINE MOBILE COURTE ET CONCEPTION VASTE CHAMP MAGNETIQUE POUR UN DEPLACEMENT SYMETRIQUE ET LINEAIRE DU CONE
- BAGUE COURTE DOUBLE EN CUIVRE EXEMPT D'OXYGENE (OFC) POUR UNE DISTORSION REDUITE
- CHASSIS RIGIDE MOULE SOUS PRESSION DE SUPPORT DE LA BASE-CHASSIS RIGIDE MOULE
- FICHE CENTRALE MOULE SOUS PRESSION EN ALUMINIUM
- HP AIGU À DÔME MOU LEGER 1-1/8"
- CONCEPTION AIMANT A RAPPEL AUTOMATIQUE FOUR DES CHAMPS MAGNETIQUES A TRES GRANDE DENSITE
- CONCEPTION CHAMBRE ARRIERE POUR DES FREQUENCES PLUS BASSES DE CHEVAUCHEMENT / TRANSFERT
- CHASSIS DU HP AIGU COULE SOUS PRESSION EN ALUMINIUM
- RESEAU DE CHEVAUCHEMENT EXTERNE DE NIVEAU AUDIOPHILE INCLUS DANS -12 dB/OCT. LPF/HPF
- TERMINAUX DU TYPE VIS PLAQUE OR

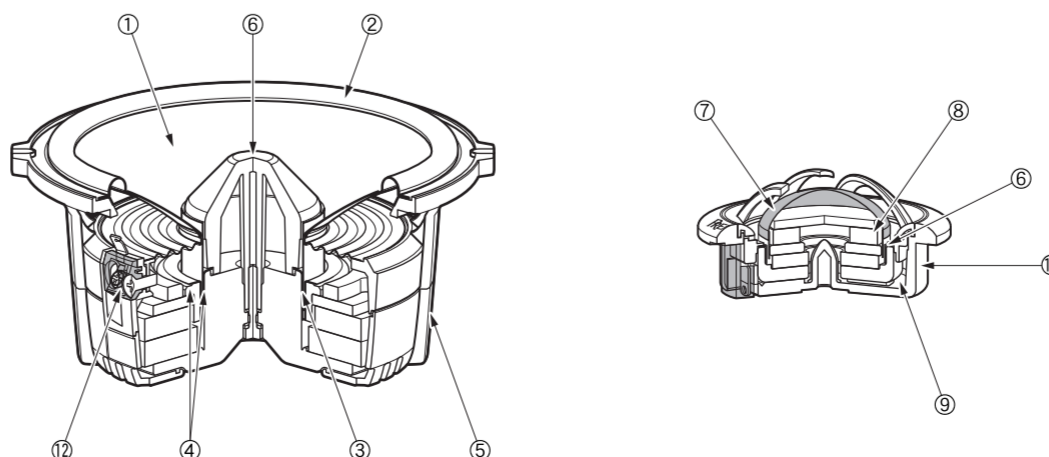
● CARACTERÍSTICAS

- FIBRA DE ARAMIDA DE 3 CAPAS CON CONO COMPUESTO DE RIGILITE™ E IMPP™
- BORDE DE MICRO-FIBRA DE ALTA DENSIDAD PARA LOGRAR UNA RESPUESTA SUAVE
- BOBINA DE VOZ CORTA Y DIBUJO DE CAMPO MAGNÉTICO AMPLIO PARA LOGRAR UN MOVIMIENTO CÓNICO SIMÉTRICO Y LINEAL
- ANILLO CORTO DOBLE DE OFC (COBRE SIN OXÍGENO) PARA LOGRAR UNA DISTORSIÓN REDUCIDA
- CHASSIS RÍGIDO DE FUNDICIÓN DE APOYO DE FONDO
- PASADOR CENTRAL DE FUNDICIÓN DE ALUMINIO
- ALTAVOZ DE SONIDOS AGUDOS EN FORMA DE DOMO BLANDO Y LIVIANO DE 1-1/8"
- DIBUJO MAGNÉTICO DE CANCELAMIENTO PARA LOGRAR UN CAMPO MAGNÉTICO DE DENSIDAD EXTREMADAMENTE ALTA
- DIBUJO DE CÁMARA TRASERA PARA LOGRAR UNA BAJA FRECUENCIA DE INTERSECCIÓN
- CHASSIS DE TWEETER DE FUNDICIÓN DE ALUMINIO
- REDE DE INTERSECCIÓN EXTERNA DE GRADO DE AUDÍFILO CON -12 dB/OCT. LPF/HPF
- TERMINALES TIPO PERNO BAÑADOS EN ORO

● CARACTERÍSTICAS

- FIBRA DE ARAMIDA DE 3 CAMADAS COM CONE COMPOSTO DE RIGILITE™ E IMPP™
- BORDA DE MICRO-FIBRA DE ALTA DENSIDADE PARA RESPOSTA SUAVE
- BOBINA DE VOZ CURTA E DESIGN DE CAMPO MAGNÉTICO AMPLIO PARA MOVIMENTO CÓNICO SIMÉTRICO E LINEAR
- ANEL CURTO DUPLO DE OFC (COBRE SEM OXIGÊNIO) PARA DISTORÇÃO REDUZIDA
- CHASSI RÍGIDO DE DIE-CAST COM DESIGN DE APOIO DE FUNDO
- PLUGUE CENTRAL DE DIE-CAST DE ALUMÍNIO
- TWEETER DÔMICO MACIO E LEVE DE 1-1/8"
- DESIGN MAGNÉTICO DE CANCELAMENTO PARA CAMPO MAGNÉTICO DE DENSIDADE EXTREMADAMENTE ALTA
- DESIGN DE CÁMARA TRASEIRA PARA BAIXA FREQUÊNCIA DE INTERSEÇÃO
- CHASSI DE TWEETER DE DIE-CAST DE ALUMÍNIO
- REDE DE INTERSEÇÃO EXTERNA DE GRAU DE AUDÍFILO COM -12 dB/OCT. LPF/HPF
- TERMINAIS DO TIPO PARAFUSO BANHADOS A OURO

Register your product at
Enregistrez votre produit au
<http://www.pioneerelectronics.com>



PREMIER