

PRV-LX1 – Settings for Final Cut Pro via Firewire for A/V Control

OVERVIEW:

Many customers with PRV-LX1 recorders use the built-in menu and edit options. However, there are some that prefer to edit video with the Final Cut Pro software application from Apple. Although several editing applications offer the Pioneer PRV-LX1 as an output option, Final Cut Pro must be configured to output video to the recorder. This document steps you through the configuration process to allow Final Cut Pro to output material to the PRV-LX1.

Once Final Cut Pro is configured to work with the PRV-LX1, the settings can be saved in the application as a selectable output option. Configuring the program is detailed below in Technical Details. During this process, the configuration is stored as an output option. When using Final Cut Pro, select this saved configuration each time you wish to send material to your PRV-LX1.

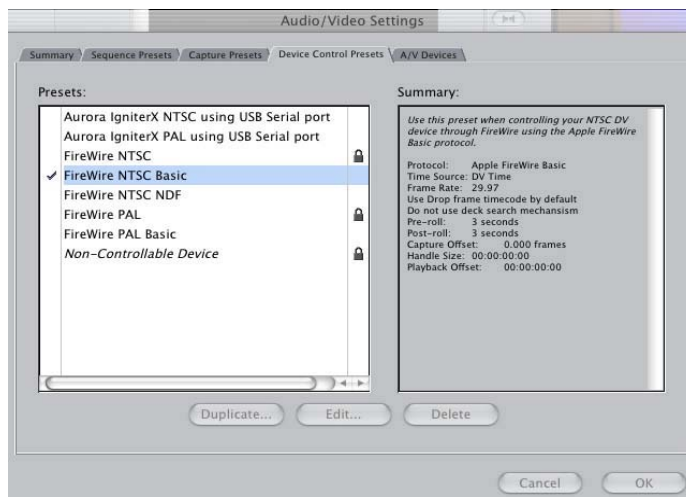
Note: It is not necessary to have your PRV-LX1 connected to your computer while configuring the program.

TECHNICAL DETAILS:

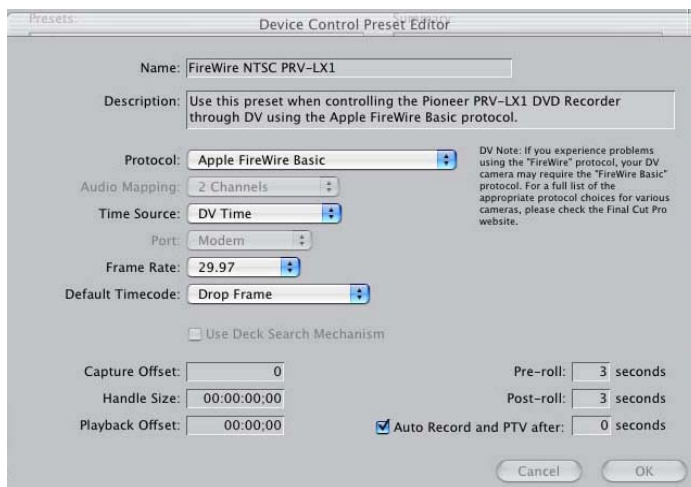
To configure Final Cut Pro (FCP) for output to the Pioneer PRV-LX1 (LX1), follow the instructions below.

Create the Device Control:

- 1) Launch the FCP application.
- 2) Select **File** from the top menu.
- 3) Choose **Audio/Video Settings** from the options.
- 4) Click on the **Device Control Presets** tab.
- 5) Highlight **Firewire NTSC Basic** for the listing of Presets.



- 6) Select **Duplicate** to create a copy of the option.
- 7) Verify/change to the following settings:
 - Protocol: Apple Firewire
 - Time Source: **DV**
 - Frame Rate: **29.97**
technology standard for 30 frames per second
 - Default Timecode: **Non-Drop Frame**
 - Auto Record checked
mark in the check box
 - PTV after set for **0 Seconds**
located in the lower right corner of the window
- 8) Rename this new Preset to a unique title such as **Firewire NTSC PRV-LX1**.
This name becomes an option within the FCP Configuration Settings selections.



- 9) Click **OK** to save the configuration settings.

Set the A / V Device:

- 10) Select the **A / V Devices** tab.
- 11) Verify that the **Different Output for Edit to Tape / Print to Video** option is unchecked.



Build a Setup:

- 12) Click on the **Summary** tab.
- 13) Select the **Create Easy Setup** option.
- 14) Create a unique name for this setup such as **Pioneer PRV-LX1**.
- 15) Choose **Create** to build the setup.

**Verify Settings:**

- 16) Go to the **Final Cut Pro Easy Setup** menu.
- 17) Verify that the box next to **All** is checked.
- 18) Review the settings for accuracy.



- 19) Click on the **Setup** button to complete the process.

ADDITIONAL INFORMATION:

PRV-LX1 information is available in the *Business Products Support* section of the Pioneer website:

[PRV-LX1 Support](http://www.pioneerelectronics.com/pna/service/support/article/0,,2076_4247_14805132,00.html) (http://www.pioneerelectronics.com/pna/service/support/article/0,,2076_4247_14805132,00.html)

The PRV-LX1 system updates are available on the above webpage. Please register your recorder to access the current update file and to receive future update notifications.

For assistance with your PRV-LX1, contact Pioneer Service at (800) 421-1613, a sales and technical representative at (310) 952-2000, or send your questions to:

<mailto:LX1-help@pioneer-usa.com>