

PRV-LX1

Importing Menu Backgrounds

Importing Edit Decision Lists

Importing Using a Network

Version 1.1

created January 9, 2004

Table of Contents

1.0	IMPORT A MENU BACKGROUND FROM CD/DVD	2
1.1	SELECT A MENU TYPE (BACKGROUND)	2
1.2	SELECT A SOURCE	3
1.3	SELECT THE SOURCE FILE	3
2.0	IMPORT AN EDIT DECISION LIST (EDL) FROM CD/DVD.....	4
2.1	SELECT AN EDL	4
2.2	SELECT THE SOURCE FILE	5
3.0	IMPORT USING A NETWORK CONNECTION	6
3.1	ACTIVATE THE NETWORK OPTION ON THE PRV-LX1	6
3.2	DHCP OR MANUAL OPTION	6
3.3	CONNECT VIA FTP	7
3.4	TROUBLESHOOTING	9

1.0 IMPORT A MENU BACKGROUND FROM CD/DVD

Menu background graphic files (.BMP or .JPG) can be imported to the LX1 HDD from CD/DVD discs or transferred via FTP (Network connection). The background images are stored in the recorder's menu library and can be accessed via the Function Menu (see below). Being as a user can delete menu graphic files from the HDD it is recommended that the user keep backup copies of these files.

GUI NAVIGATION NOTE: The user can navigate the LX1 GUI with the front panel keys, with a USB keyboard or with a USB mouse. When using the front panel or keyboard to select an option, highlight the GUI menu item and press the ENTER key on the front panel or the keyboard. When using a mouse to select an option, double-click on the GUI menu item. An orange box appears next to the GUI menu item when it is selected.

1.1 Select a Menu Type (Background)

Follow the steps below to import a menu background.

- 1) Insert a CD-ROM or DVD-ROM disc containing your custom menu backgrounds into Drive 1 (DVD1).
 - The PRV-LX1 only accepts JPEG or Bitmap files.
 - Menu background file names may not contain spaces.
Ex: Logo Screen.jpg should be imported as LogoScreen.jpg or Logo-Screen.jpg
- 2) Press the **Function** button on the PRV-LX1's front panel to access the main menu.
- 3) Select **Copy/Import/Bkup** under the APP section.
- 4) Select **Menu Import** to display the Import submenu.
- 5) Select **Type** to display the menu type choices.
- 6) Select **Background** to select a menu type.
- 7) Verify that an orange box (■) appears next to Background.

Example: Background is selected as the Menu Type.



1.2 Select a Source

The following steps direct the PRV-LX1 where to find the menu background graphic files (DVD1, DVD2 or Import Directory on the HDD).

- 1) Select **Source** to display the source device options.
- 2) Select the drive that contains the data disc (DVD1) to select it as the source device.
The Import directory is used for network connection using FTP (see section 3.0).
- 3) Verify that an orange box (■) appears next to DVD1.

Example: Drive 1 (DVD1) is selected.



Note: When selecting drive DVD1 or DVD2 as the [Source] to import menu backgrounds or EDL files, insert the disc first then select the drive. The unit refreshes the [Source File] data when the drive is selected. Selecting the drive then inserting the disc defeats the Source refresh.

1.3 Select the Source File

Follow the steps below to select a menu background graphic file to import.

- 1) Select **Source File** to display the available menu background files.
A user can choose to import ALL menu background files or select individual files from that source.
- 2) Select ALL or select an individual file name to import the menu background file(s).
- 3) Verify that an orange box (■) appears next to ALL or next to the individual file to import.

Example: The desired menu background is selected.



- 4) Select **Add to Library** to highlight the button.
- 5) Select **Add-to-Library** again to activate the button.
A dialog box appears, "Are You Sure..."
- 6) Select **Import** to add the menu background to the HDD library.
- 7) Repeat step 2 through step 6 to import another individual file.

2.0 IMPORT AN EDIT DECISION LIST (EDL) FROM CD/DVD

Edit Decision List (.EDL) files can be imported into the LX1 HDD from CD/DVD discs or transferred via FTP (Network connection). EDL files are stored in the recorder's EDL library and can be accessed via the Function Menu (see below). Being as a user can delete EDL files from the HDD it is recommended that the user keep backup copies of these files.

GUI NAVIGATION NOTE: The user can navigate the LX1 GUI with the front panel keys, with a USB keyboard or with a USB mouse. When using the front panel or keyboard to select an option, highlight the GUI menu item and press the ENTER key on the front panel or the keyboard. When using a mouse to select an option, double-click on the GUI menu item. An orange box appears next to the GUI menu item when it is selected.

2.1 Select an EDL

Follow the steps below to import an EDL.

- 1) Insert a CD-ROM or DVD-ROM disc containing your customized EDL file(s) into Drive 1 (DVD1).
EDL file names may not contain spaces.
Ex: Weekly Loop.edl should be imported as WeeklyLoop.edl or Weekly-Loop.edl
- 2) Select the **Function** button on the PRV-LX1's front panel to access the main menu.
- 3) Select **Copy/Import/Bkup** under the APP section.
- 4) Select **EDL Import** to activate the EDL Import submenu.
- 5) Select **Source** to display the source device options.
- 6) Select the drive that contains the data disc (DVD1) to select it as the source device.
The Import directory is used for network connections using FTP (see section 3.0).

- 7) Verify that an orange box (■) appears next to DVD1.

Example: DVD1 is selected as the target drive.



Note: When selecting drive DVD1 or DVD2 as the [Source] to import menu background or EDL files, insert the disc first then select the drive. The unit refreshes the [Source File] data when the drive is selected. Selecting the drive then inserting the disc defeats the Source refresh.

2.2 Select the Source File

Follow the steps below to select an EDL to import.

- 1) Select **Source File** to display the available EDL files.
The user can choose to import ALL EDL files or select individual files from that source.
- 2) Select ALL or select an individual file name to import the EDL file(s).
- 3) Verify that an orange box (■) appears next to ALL or next to the EDL file to import.

Example: The desired EDL is selected.



- 4) Select **Add to Library** to highlight the button.
- 5) Select **Add-to-Library** again to activate the button.
A dialog box appears, "Are You Sure..."
- 6) Select **Import** to add the EDL to the EDL Library.
- 7) Repeat step 2 through step 6 to import another individual file.

3.0 IMPORT USING A NETWORK CONNECTION

Menu Background Graphic files and EDL files can be transferred to the LX1 via FTP when it is connected to a network via the ethernet connector on the rear panel of the unit. Any FTP software can be used. For this example Internet Explorer version 6.0 is used. The instructions below provide step-by-step directions to connect the PRV-LX1 to a network and to transfer files to the PRV-LX1 via FTP.

3.1 Activate the Network Option on the PRV-LX1

Follow the steps below to turn ON the network option.

- 1) Connect the PRV-LX1 to a network using either a straight cable connected to a hub or a cross cable.
- 2) Select the **Function** button on the PRV-LX1's front panel to access the main menu.
- 3) Select **System** under the SETUP section.
- 4) Select **Network** (far left column) to display the Network submenu.
- 5) Select **Network** (middle column) to display the options.
- 6) Select **ON** to activate.
- 7) Verify that an orange box (■) appears next to ON.

Example: Network set to ON



Example: Network Selections



3.2 DHCP or Manual Option

There are two network options to choose from, DHCP and Manual. DHCP automatically seeks a free IP address available on the network and assigns it to the PRV-LX1. Manual mode requires the user to type in the IP address, Subnet Mask, and Gateway parameters, which can be obtained from your network administrator. Follow the steps below to select which network protocol to use.

Note: If DHCP is selected but no DHCP server exists, the PRV-LX1 takes additional time to start up after the power is turned ON. If this option is not being used, set DHCP to OFF.

Follow the directions below to set the network connection.

- 1) Select **DHCP/Manual** from the Network submenu.
- 2) Select **DHCP** to activate this option.

- 3) Verify that an orange box (■) appears next to DHCP.

Example: DHCP is selected.



- 4) Write down the IP address automatically assigned, it is needed in the following section. *The IP address may not auto-refresh. If the IP address assigned to the PRV-LX1 fails to appear, follow the directions below to refresh the IP address:*
 1. Select the **Back** button located at the bottom of the menu.
 2. Select **System** under the SETUP section.
 3. Select **Network** (far left column) to access the Network submenu.

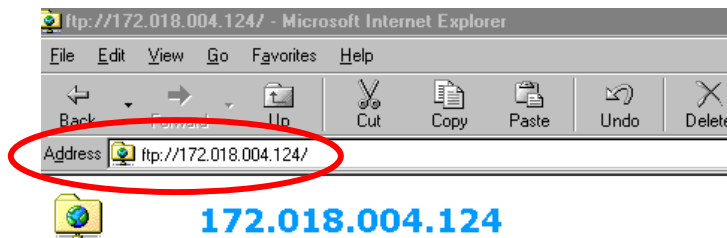
Note: If the IP address still fails to appear, verify that the network cables are securely connected and that there is an active Network connection. Repeat steps 1-3 to attempt connection.

3.3 Connect via FTP

The following steps are to be completed from a computer with an active Network connection. Verify that both the computer and the PRV-LX1 are connected to the Network via a hub or a crossover cable.

- 1) Launch Internet Explorer (Must be version 6.0 or higher).
- 2) Enter the PRV-LX1's IP address into the browser window:

<ftp://172.018.004.124>



Note: Your IP address will be different from the address used in this example. Refer to section 3.1 to obtain the IP address for your PRV-LX1.

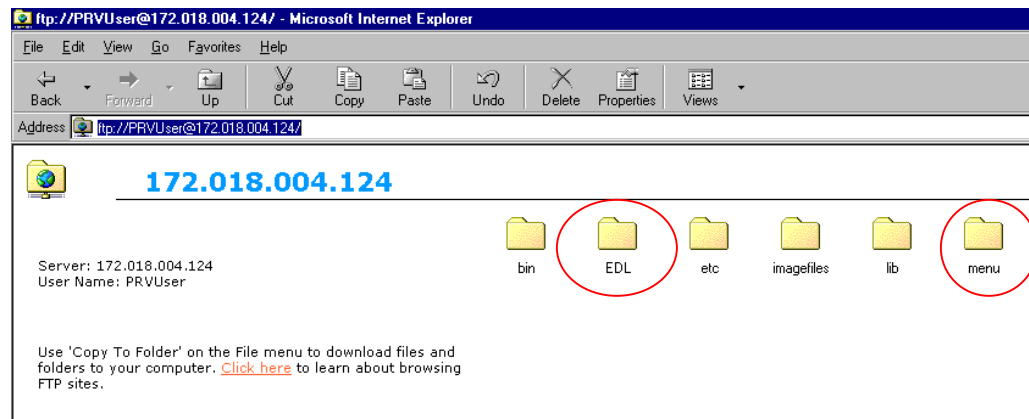
- 3) Press **Enter** on the keyboard to display the *Login As* dialog box.
It may take up to one minute to establish the *FTP* connection.



- 4) Type in the user name and password.
Both the user name and password are case sensitive.

User Name: **PRVUser**
Password: **prv-lx1**

- 5) Click on the **Login** button.
The *EDL*, *Menu*, and other folders appear in the browser window.



- 6) Copy your file(s) into the appropriate folder(s).
 - Menu background graphic (.BMP or .JPG) files are copied into the *menu* folder
 - EDL (.edl) files are copied into the *EDL* folder

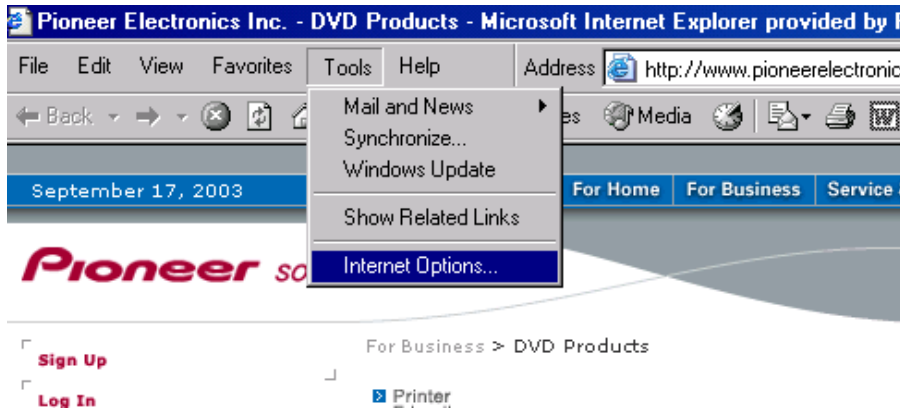
Copying files into folders on the PRV-LX1 is the same as copying files on a computer. You may use either the copy/paste option or the drag-and-drop method to copy files.

Once the files are copied into the folders, they still need to be placed in the appropriate areas on the HDD. An imported file resides in the Import directory until it is moved to a library. To move an imported file, please refer to Section 1.0 for a menu background file or Section 2.0 for an EDL file.

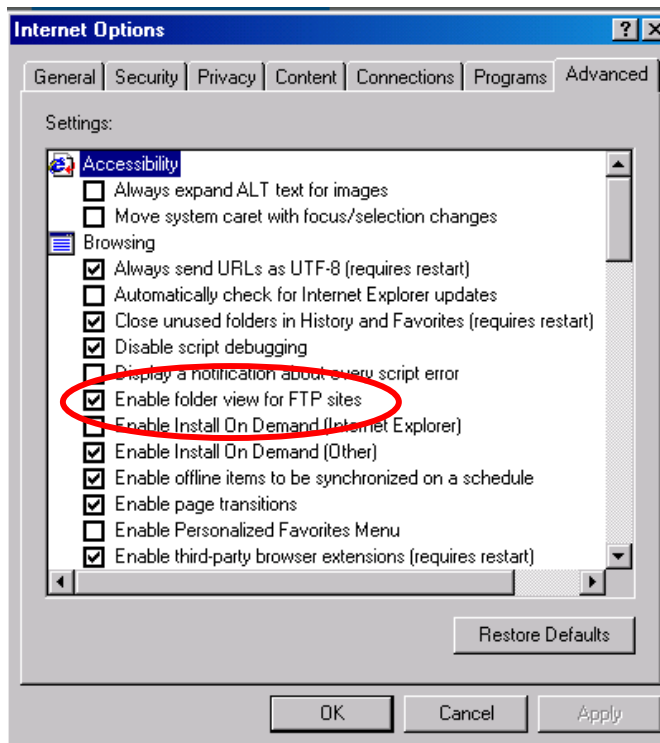
3.4 Troubleshooting

If you are unable to connect to the PRV-LX1 using the previous method, follow the steps below:

- 1) Select **Tools** in Internet Explorer.
- 2) Select **Internet Options** under the Tools submenu.



- 3) Select the **Advanced** tab.
- 4) Place a checkmark in the **Enable folder view for FTP sites** box.

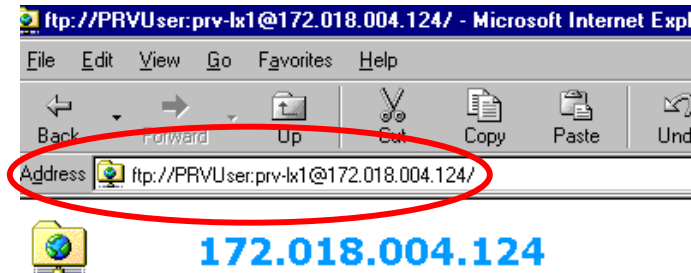


- 5) Select **OK** to activate this option.

- 6) Type the following into the browser window:

<ftp://PRVUser:prv-lx1@172.018.004.124>

Your IP address will be different from the address used in this example. Refer to section 3.1 to obtain the IP address for your PRV-LX1.



- 7) Press **Enter** on the keyboard.

The EDL, Menu and other folders appear in the browser window.

If you still are unable to connect, try dropping the leading zeros in the IP address.

Example: IP address 012.120.032.051 becomes 12.120.32.51.